

Interface RF unit (EM1024)

External radio-transmitting unit for data transmission from meters of water, heat, electricity and gas or other devices with RS232/485/CAN (or M-Bus) interfaces. Supply voltage is 220/110 VAC, 120mA.

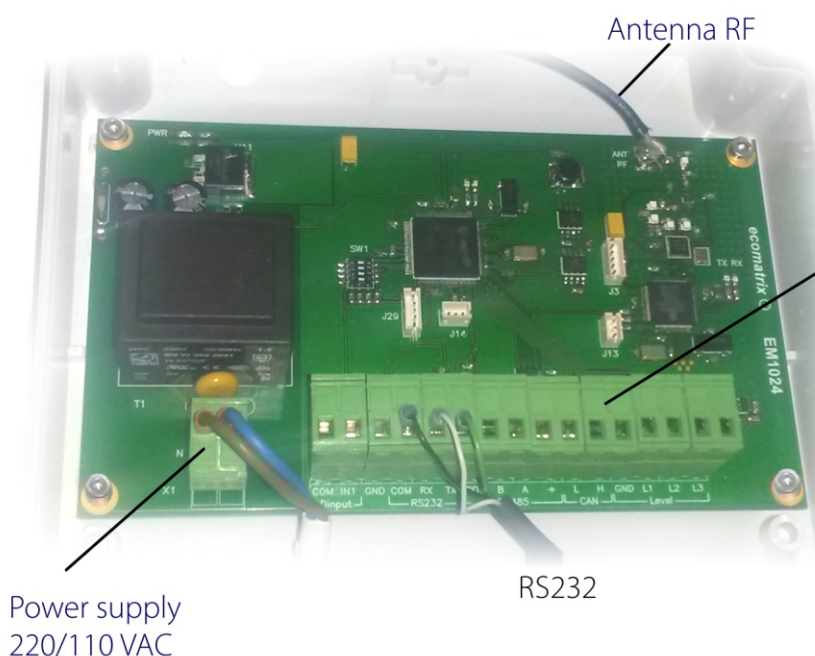
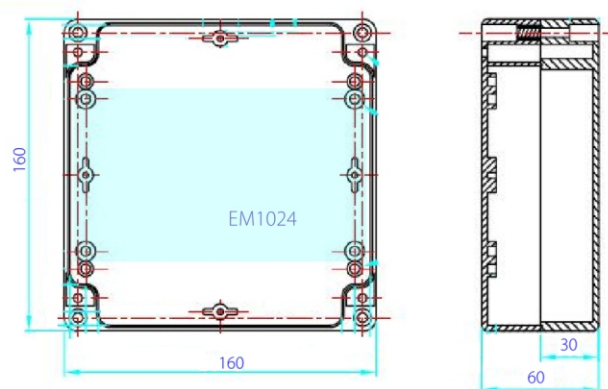
The module has built-in RS232, RS485, CAN interfaces, and also 3 digital inputs from the liquid level switch, 1 digital input from alarm system devices - security or fire alarm systems, etc.

The user settings are set by RF with the special program and stored to the non-volatile memory. Communication protocols for connecting different devices are specified in the order.



Parameters	Description
Description	Interface RF unit EM1024
Input Connection Types	3 digital inputs from the liquid level switch (sensor flooding), 1 input from security or fire alarm sensors, serial RS232/RS485/CAN/M-BUS interfaces
Inputs Specification	Digital inputs: dry contact or open collector transistor. Maximum input cable length: digital inputs - 10 meters, RS232 - 50 m, RS485 - 600 m, CAN - 200 m
Box Size	160x160x60mm
Unit Weight	700 g
Power Supply	220/110 VAC, 120 mA
RF Transmit Bitrate	10.0 kbps
RF frequencies (ranges)	FSK 433/865/868/902 MHz - is defined of each country regulations
Configuration Storage	Non-volatile memory
Operating Temperatures	-20° C to +60° C
Environmental	IP-65
Humidity	Max. 90%

Main dimensions, mm



Signals of connection terminals

COM	Dinput	Digital Input from Alarm systems	
In1			
GND	Ground	Protective grounding of the unit	
COM			
RX	RS232	To devices with RS232 interface	
TX			
COM			
B	RS485	To devices with RS485 interface	
A			
+			
L	CAN	To devices with CAN interface	
H			
GND			
L1	Dinput	3 inputs for liquid level switch	
L2			
L3			